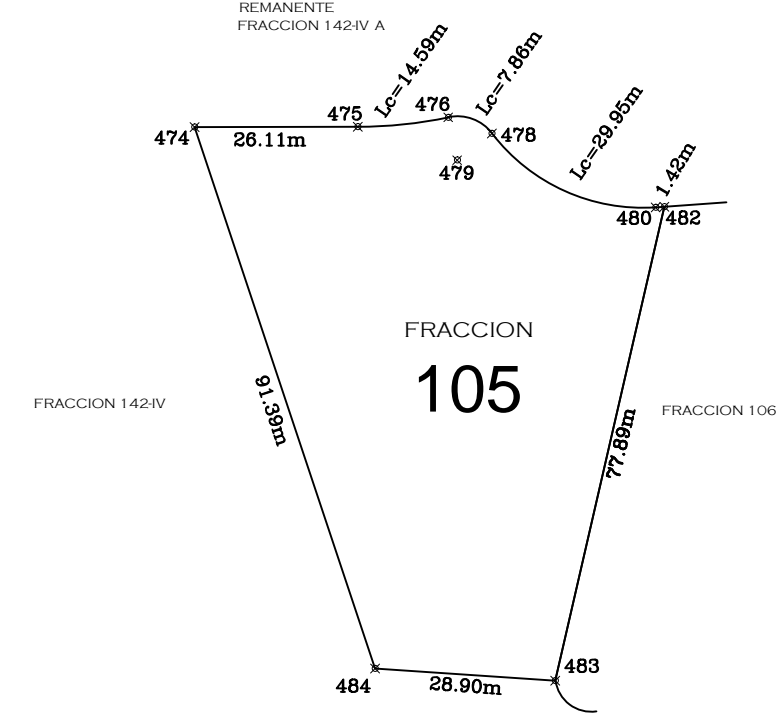


LADO EST	PV	RUMBO	DISTANCIA	Y	C O O R D E N A D A S	X
474	475	N 86°52'37.05" E	28.11	474	2,530,066.915	606,482.070
475	476	N 84°04'32.24" E	14.56	476	2,530,068.971	606,478.178
CENTRO DE CURVA LONG. CURVA = 14.59 DELTA RADIO = 70.51						
476	478	S 89°40'55.52" E	7.46	478	2,530,068.971	606,482.070
CENTRO DE CURVA LONG. CURVA = 7.86 DELTA RADIO = 4.40						
478	480	S 85°43'48.50" E	28.75	480	2,530,054.007	606,525.863
CENTRO DE CURVA LONG. CURVA = 29.95 DELTA RADIO = 11.04						
480	482	N 86°02'01.67" E	1.42	482	2,530,054.166	606,527.282
482	483	S 12°56'17.70" W	77.80	483	2,530,978.268	606,509.799
483	484	N 86°08'02.10" W	28.90	484	2,530,960.217	606,480.984
484	474	N 18°20'04.24" W	91.39	474	2,530,066.915	606,482.070

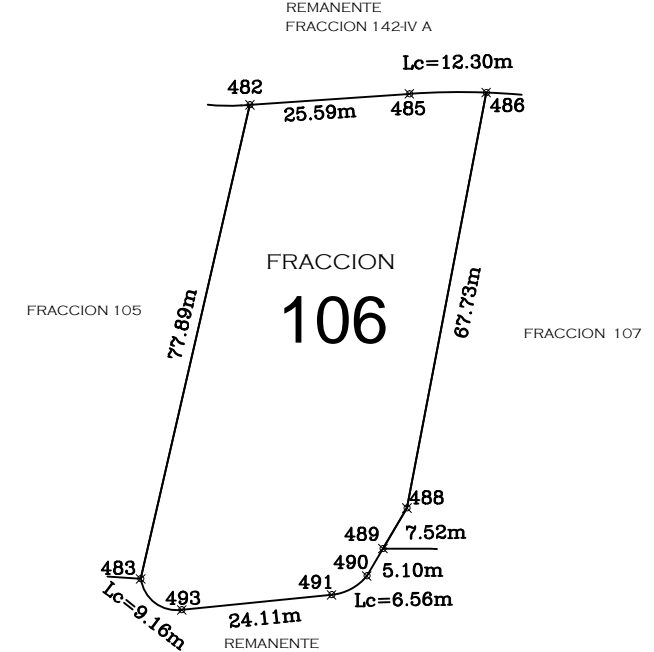


DESCRIPCION TECNICA DE LA FRACCION 105 SUPERFICIE: 4,412.82 M2 QUE DESCRIBE SUS MEDIDAS Y COLINDANCIAS:

AL NORTE 26.11 MTS. CON REMANENTE FRACCION 142-IV A
Lc = 14.59 MTS. CON REMANENTE FRACCION 142-IV A
Lc = 7.86 MTS. CON REMANENTE FRACCION 142-IV A
Lc = 29.95 MTS. CON REMANENTE FRACCION 142-IV A
1.42 MTS. CON REMANENTE FRACCION 142-IV A

AL ESTE 77.80 MTS. CON FRACCION 106
AL SUR 28.90 MTS. CON REMANENTE FRACCION 142-IV A
AL SUROESTE 91.39 MTS. CON REMANENTE FRACCION 142-IV A

LADO EST	PV	RUMBO	DISTANCIA	Y	C O O R D E N A D A S	X
482	485	N 86°02'01.67" E	25.59	485	2,530,054.166	606,527.282
485	486	N 89°04'36.00" E	12.30	486	2,530,056.135	606,565.107
CENTRO DE CURVA LONG. CURVA = 12.30 DELTA RADIO = 115.92						
486	488	S 10°48'34.00" W	67.73	488	2,529,969.603	606,552.408
CENTRO DE CURVA LONG. CURVA = 67.73 DELTA RADIO = 115.92						
488	489	S 30°31'31.04" W	7.52	489	2,529,978.729	606,545.996
489	490	S 81°48'18.41" W	6.40	490	2,529,978.729	606,545.996
CENTRO DE CURVA LONG. CURVA = 6.40 DELTA RADIO = 5.38						
490	491	S 84°16'53.33" W	24.11	491	2,529,973.306	606,516.371
491	493	S 52°56'26.50" W	8.23	493	2,529,978.268	606,509.799
CENTRO DE CURVA LONG. CURVA = 9.18 DELTA RADIO = 9.16						
493	483	N 12°56'17.70" E	77.80	483	2,530,978.268	606,509.799
483	482	N 12°56'17.70" E	77.80	482	2,530,054.166	606,527.282



DESCRIPCION TECNICA DE LA FRACCION 106 SUPERFICIE: 3,101.94M2 QUE DESCRIBE SUS MEDIDAS Y COLINDANCIAS:

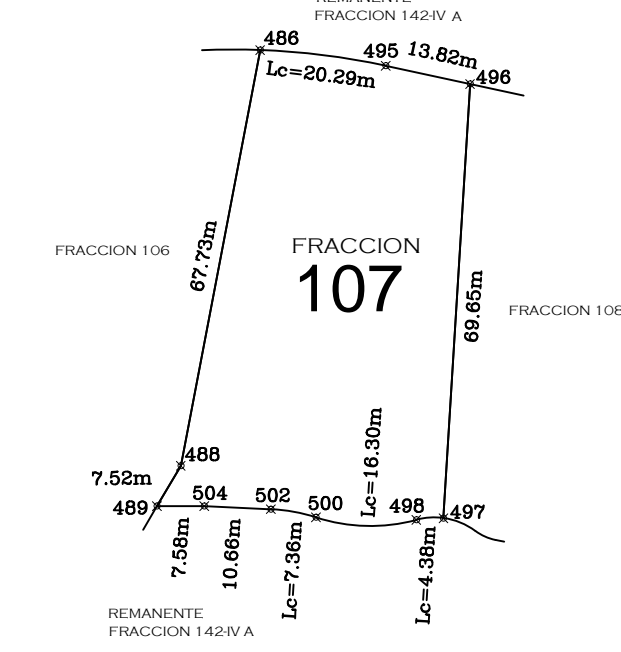
AL NOROESTE 25.59 MTS. CON REMANENTE FRACCION 142-IV A
Lc = 12.30 MTS. CON REMANENTE FRACCION 142-IV A

AL ESTE 67.73 MTS. CON FRACCION 107

AL SUR 5.10 MTS. CON REMANENTE FRACCION 142-IV A
Lc = 6.56 MTS. CON REMANENTE FRACCION 142-IV A
24.11 MTS. CON REMANENTE FRACCION 142-IV A
Lc = 9.16 MTS. CON REMANENTE FRACCION 142-IV A

AL OESTE 77.80 MTS. CON FRACCION 105

LADO EST	PV	RUMBO	DISTANCIA	Y	C O O R D E N A D A S	X
488	485	S 82°52'18.64" E	20.28	488	2,530,066.135	606,565.107
CENTRO DE CURVA LONG. CURVA = 20.29 DELTA RADIO = 10.17						
485	490	S 77°51'27.70" E	13.82	490	2,530,050.714	606,508.723
490	497	S 03°30'46.76" E	69.65	497	2,528,981.195	606,594.455
497	498	S 82°44'47.80" W	4.35	498	2,528,980.923	606,590.110
CENTRO DE CURVA LONG. CURVA = 4.38 DELTA RADIO = 11.04						
498	500	N 89°31'16.00" E	16.08	500	2,529,981.337	606,574.040
CENTRO DE CURVA LONG. CURVA = 16.30 DELTA RADIO = 28.40						
500	502	N 79°44'49.47" W	7.33	502	2,529,982.643	606,568.623
CENTRO DE CURVA LONG. CURVA = 7.36 DELTA RADIO = 15°19'49.22" 27.49						
502	504	N 87°24'44.00" E	10.66	504	2,529,983.124	606,556.169
504	489	N 89°59'45.87" E	7.52	489	2,529,983.125	606,548.588
489	488	N 30°31'31.04" E	7.52	488	2,530,056.135	606,565.107
488	488	N 10°48'24.80" E	67.73	488	2,530,056.135	606,565.107

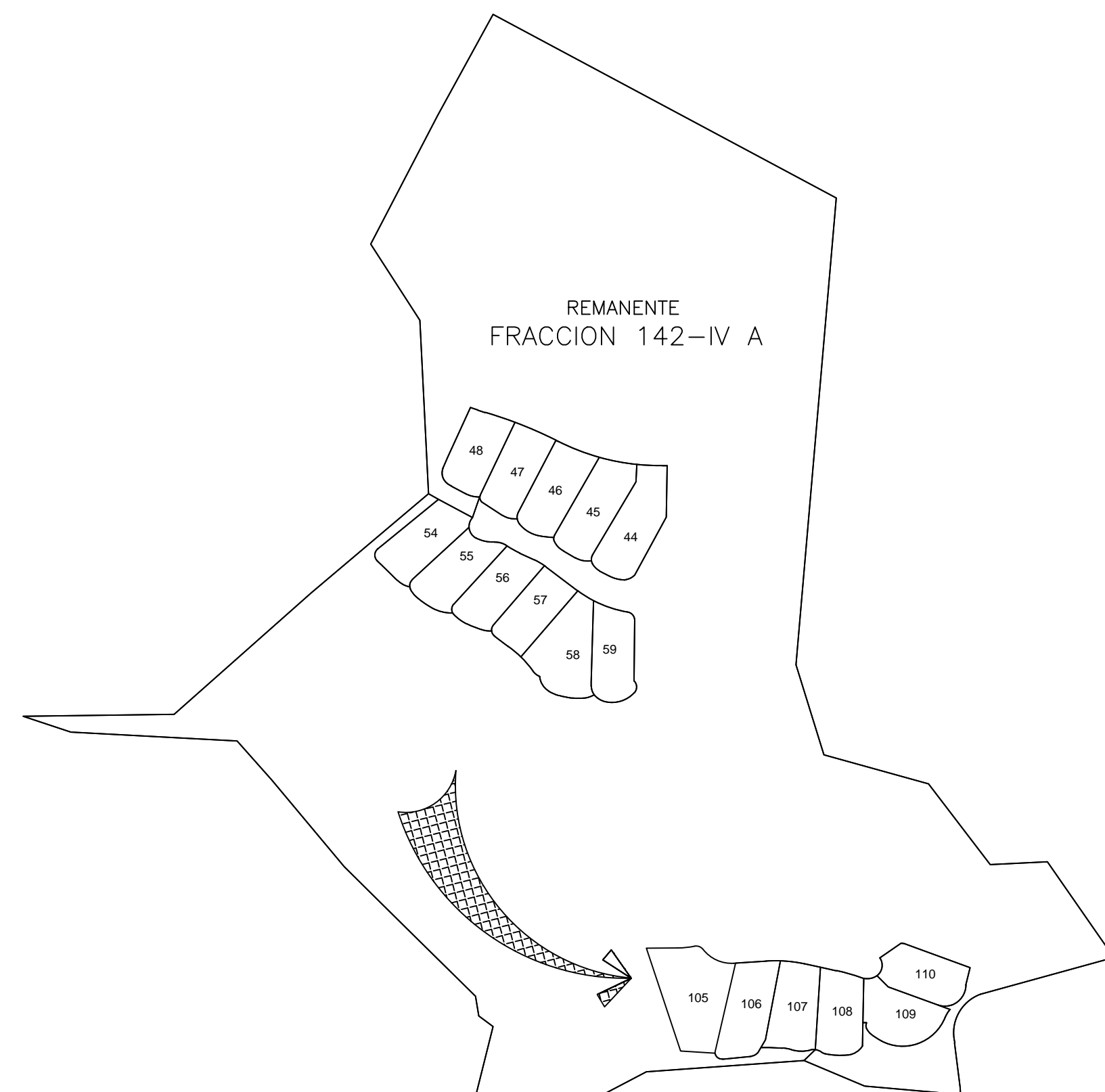


DESCRIPCION TECNICA DE LA FRACCION 107 SUPERFICIE: 2,820.86 M2 QUE DESCRIBE SUS MEDIDAS Y COLINDANCIAS:

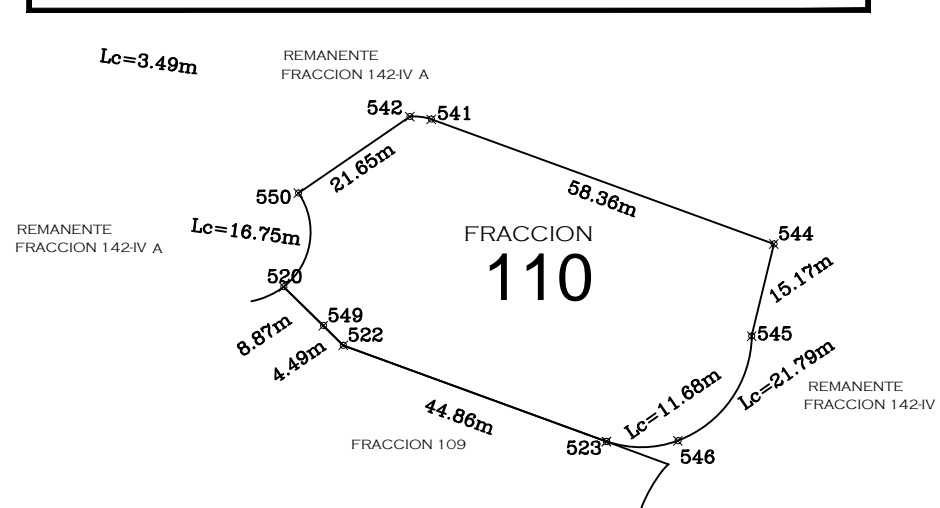
AL NORTE Lc = 20.29 MTS. CON REMANENTE FRACCION 142-IV A
13.82 MTS. CON REMANENTE FRACCION 142-IV A

AL ESTE 69.65 MTS. CON FRACCION 108
Lc = 4.38 MTS. CON REMANENTE FRACCION 142-IV A
Lc = 16.30 MTS. CON REMANENTE FRACCION 142-IV A
10.66 MTS. CON REMANENTE FRACCION 142-IV A
7.52 MTS. CON REMANENTE FRACCION 142-IV A

AL NOROESTE 7.52 MTS. CON FRACCION 106
67.73 MTS. CON FRACCION 106



LADO EST	PV	RUMBO	DISTANCIA	Y	C O O R D E N A D A S	X
542	541	S 82°49'02.33" E	3.47	541	2,530,070.861	606,666.532
CENTRO DE CURVA LONG. CURVA = 3.49 DELTA RADIO = 10.61						
541	544	S 70°00'37.55" E	68.38	544	2,530,050.478	606,724.824
544	545	S 13°39'46.48" W	15.17	545	2,530,053.723	606,721.283
545	546	S 35°12'06.42" W	20.52	546	2,530,018.858	606,709.454
CENTRO DE CURVA LONG. CURVA = 21.70 DELTA RADIO = 68°20'41.51" 18.27						
546	523	S 89°21'18.85" W	11.44	523	2,530,018.827	606,698.014
CENTRO DE CURVA LONG. CURVA = 11.88 DELTA RADIO = 16.75						
523	522	N 89°54'15.51" W	44.88	522	2,530,034.940	606,855.888
522	549	N 42°30'04.90" W	4.49	549	2,530,037.382	606,852.880
549	520	N 42°30'04.90" W	8.87	520	2,530,043.588	606,848.347
520	550	N 08°51'48.55" E	15.30	550	2,530,058.805	606,848.888
CENTRO DE CURVA LONG. CURVA = 16.75 DELTA RADIO = 84°44'15.87" 11.07						
550	542	N 55°30'57.33" E	21.65	542	2,530,070.861	606,666.532



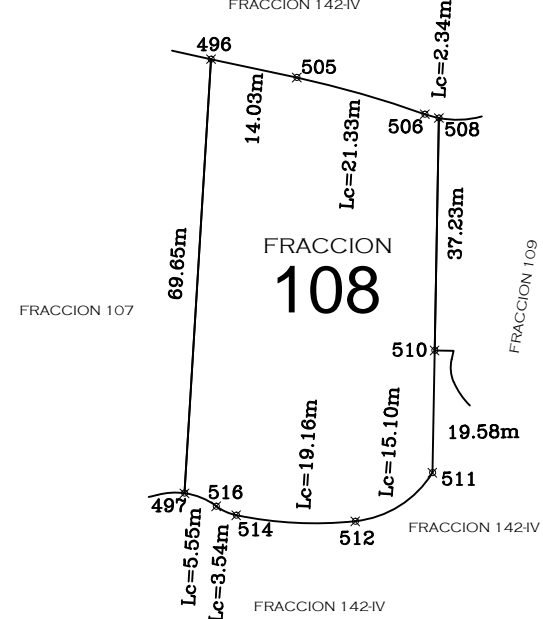
DESCRIPCION TECNICA DE LA FRACCION 110 SUPERFICIE: 2,672.93 M2 QUE DESCRIBE SUS MEDIDAS Y COLINDANCIAS:

AL NORTE Lc = 3.49 MTS. CON REMANENTE FRACCION 142-IV A
58.38 MTS. CON REMANENTE FRACCION 142-IV A

AL ESTE 15.17 MTS. CON REMANENTE FRACCION 142-IV A
Lc = 21.70 MTS. CON REMANENTE FRACCION 142-IV A
Lc = 11.88 MTS. CON REMANENTE FRACCION 142-IV A
4.49 MTS. CON FRACCION 109
8.87 MTS. CON FRACCION 109

AL SUR Lc = 16.75 MTS. CON REMANENTE FRACCION 142-IV A
21.65 MTS. CON REMANENTE FRACCION 142-IV A

LADO EST	PV	RUMBO	DISTANCIA	Y	C O O R D E N A D A S	X
496	505	S 77°51'27.70" E	14.03	505	2,530,050.714	606,508.723
505	506	S 74°02'28.02" E	21.33	506	2,530,041.900	606,632.940
CENTRO DE CURVA LONG. CURVA = 21.33 DELTA RADIO = 07°58'11.50" 160.07						
506	508	S 74°37'18.84" E	2.34	508	2,530,041.900	606,632.940
CENTRO DE CURVA LONG. CURVA = 2.34 DELTA RADIO = 15.54						
508	510	S 01°03'10.76" W	37.23	510	2,530,024.000	606,254.511
510	511	S 01°03'10.76" W	19.58	511	2,529,984.481	606,534.152
511	512	S 57°49'02.67" W	14.56	512	2,529,978.713	606,821.809
CENTRO DE CURVA LONG. CURVA = 15.10 DELTA RADIO = 52°23'45.31" 15.52						
512	514	N 87°05'47.00" W	19.09	514	2,529,977.600	606,602.746
CENTRO DE CURVA LONG. CURVA = 19.10 DELTA RADIO = 17°46'25.10" 61.77						
514	516	N 65°48'15.11" W	3.51	516	2,529,978.120	606,599.541
CENTRO DE CURVA LONG. CURVA = 3.54 DELTA RADIO = 8.18						
516	497	N 67°48'20.58" W	5.49	497	2,529,981.195	606,594.455
CENTRO DE CURVA LONG. CURVA = 5.55 DELTA RADIO = 28°48'39.68" 11.04						
497	496	N 03°30'46.76" E	69.65	496	2,530,050.714	606,508.723



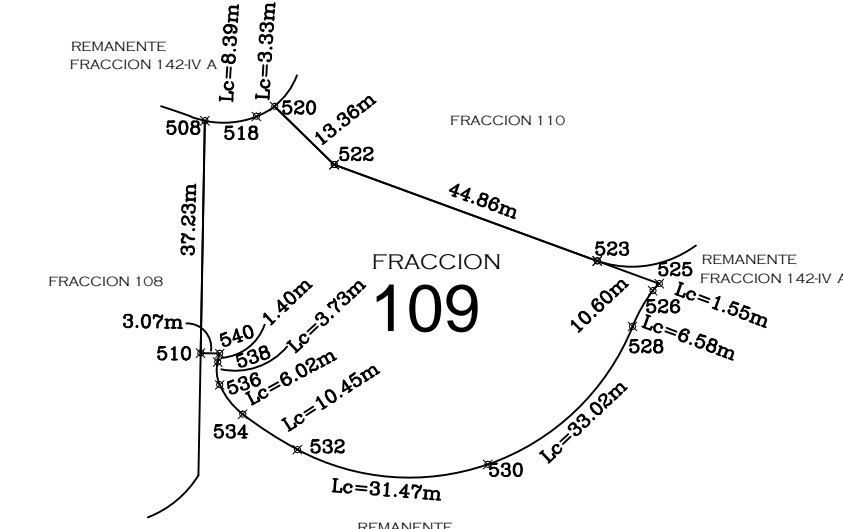
DESCRIPCION TECNICA DE LA FRACCION 108 SUPERFICIE: 2,617.48 M2 QUE DESCRIBE SUS MEDIDAS Y COLINDANCIAS:

AL NORTE 14.03 MTS. CON REMANENTE FRACCION 142-IV A
Lc = 21.33 MTS. CON REMANENTE FRACCION 142-IV A
Lc = 2.34 MTS. CON REMANENTE FRACCION 142-IV A

AL ESTE 37.23 MTS. CON FRACCION 109
19.58 MTS. CON REMANENTE FRACCION 142-IV A
Lc = 15.10 MTS. CON REMANENTE FRACCION 142-IV A
Lc = 3.54 MTS. CON REMANENTE FRACCION 142-IV A
Lc = 5.55 MTS. CON REMANENTE FRACCION 142-IV A

AL OESTE 69.65 MTS. CON FRACCION 107

LADO EST	PV	RUMBO	DISTANCIA	Y	C O O R D E N A D A S	X
508	518	N 87°00'00.00" E	8.28	518	2,530,041.279	606,635.195
CENTRO DE CURVA LONG. CURVA = 8.39 DELTA RADIO = 14.71						
518	520	N 67°50'02.97" E	3.32	520	2,530,043.588	606,646.347
CENTRO DE CURVA LONG. CURVA = 3.33 DELTA RADIO = 11.07						
520	522	S 47°30'04.90" E	13.36	522	2,530,034.840	606,655.888
522	523	S 89°54'15.51" E	44.86	523	2,530,018.827	606,698.014
523	525	S 89°54'15.51" E	10.60	525	2,530,015.187	606,707.965
525	526	S 42°59'27.07" W	1.55	526	2,530,014.055	606,708.910
CENTRO DE CURVA LONG. CURVA = 1.55 DELTA RADIO = 11°22'42.28" 7.80						
526	528	S 82°49'02.33" W	6.56	528	2,530,008.350	606,703.665
CENTRO DE CURVA LONG. CURVA = 6.58 DELTA RADIO = 15°20'54.42" 24.57						
528	530	S 42°30'04.90" W	32.03	530	2,530,002.843	606,667.710
CENTRO DE CURVA LONG. CURVA = 33.02 DELTA RADIO = 48°48'1.48" 36.02						
530	532	N 82°32'10.00" W	30.56	532	2,529,988.623	606,650.000
CENTRO DE CURVA LONG. CURVA = 31.47 DELTA RADIO = 47°28'15.99" 58.02						
532	534	N 87°09'15.30" W	10.44	534	2,529,994.284	606,641.237
CENTRO DE CURVA LONG. CURVA = 10.45 DELTA RADIO = 09°03'30.44" 64.07						
534	536	N 37°53'33.34" W	0.95	536	2,529,998.983	606,637.579
CENTRO DE CURVA LONG. CURVA = 8.02 DELTA RADIO = 59'17'46.46" 11.82						
536	538	N 08°01'28.58" W	3.67	538	2,530,002.838	606,637.258
CENTRO DE CURVA LONG. CURVA = 3.73 DELTA RADIO = 38°33'25.04" 5.85						
538	540	N 13°19'16.94" E	1.40	540	2,530,004.055	606,637.580
540	510	N 89°54'15.51" E	3.07	510	2,530,054.000	606,534.511
510	508	N 01°03'10.76" E	37.23	508	2,530,041.279	606,635.195



DESCRIPCION TECNICA DE LA FRACCION 109 SUPERFICIE: 2,750.72 M2 QUE DESCRIBE SUS MEDIDAS Y COLINDANCIAS:

AL NORTE Lc = 8.39 MTS. CON REMANENTE FRACCION 142-IV A
Lc = 3.33 MTS. CON REMANENTE FRACCION 142-IV A
13.36 MTS. CON FRACCION 110
44.86 MTS. CON FRACCION 110
10.60 MTS. CON REMANENTE FRACCION 142-IV A

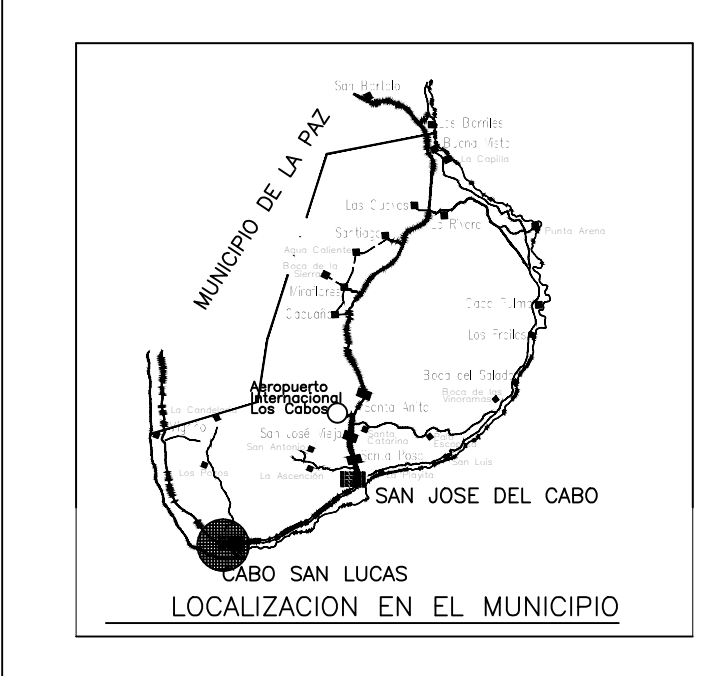
AL SURESTE Lc = 1.55 MTS. CON REMANENTE FRACCION 142-IV A
Lc = 6.58 MTS. CON REMANENTE FRACCION 142-IV A
Lc = 33.02 MTS. CON REMANENTE FRACCION 142-IV A
Lc = 31.47 MTS. CON REMANENTE FRACCION 142-IV A

AL SUR Lc = 10.45 MTS. CON REMANENTE FRACCION 142-IV A
Lc = 6.02 MTS. CON REMANENTE FRACCION 142-IV A
Lc = 3.73 MTS. CON REMANENTE FRACCION 142-IV A
3.07 MTS. CON REMANENTE FRACCION 142-IV A

AL OESTE 37.23 MTS. CON FRACCION 108

TABLA DE AREAS

FRACCION 142-IV A	355,932.30 M2
FRACCION 44	3,497.96 M2
FRACCION 45	3,189.25 M2
FRACCION 46	2,931.37 M2
FRACCION 47	2,717.00 M2
FRACCION 48	2,657.67 M2
FRACCION 54	2,851.84 M2
FRACCION 55	2,730.86 M2
FRACCION 56	2,679.19 M2
FRACCION 57	2,543.21 M2
FRACCION 58	3,534.76 M2
FRACCION 59	2,738.05 M2
FRACCION 105	4,412.82 M2
FRACCION 106	3,101.94 M2
FRACCION 107	2,820.86 M2
FRACCION 108	2,617.48 M2
FRACCION 109	2,750.72 M2
FRACCION 110	2,672.93 M2
REMANENTE FRACCION 142-IV A	305,484.39 M2
SUMA TOTAL	355,932.30 M2



contenido:
Plano topografico
FRACCIONES 105-110 /142-IV A

ESC: ACOTAMIENTO	INDICADO	5/7	laminas:	F 105-110/142-IV
FECHA	SEPTIEMBRE /2019			